

EROSION AND SEDIMENT MANAGEMENT Policy & Regulatory Tools for Local Government



Brisbane City Council Presentation to Down to Earth Conference
8th September 2005



Summary

- There is a need for improved policy and regulatory tools
- Evidence from site audits
- Legislative amendments
- Regulatory improvements



The issues

- Approx 137,000 tonnes of sediment per year entering Moreton Bay via urban stormwater
- Loss of sea grass, loss of habitat and commercial fisheries
- Poor erosion and sediment control is a major contributor - *Dennison & Abal, Moreton Bay Study, 1999*
- Need to improve source control

CLEAN AND GREEN CITY



CLEAN AND GREEN CITY



CLEAN AND GREEN CITY



CLEAN AND GREEN CITY





CLEAN AND GREEN CITY



Current controls

- Erosion & sediment control standard
- Development permit conditions
- EPP Water s.31 & s.32:
 - inspections
 - complaints
 - on-the-spot fines
 - prosecutions
- Regular site audits

CLEAN AND GREEN CITY



CLEAN AND GREEN CITY



Evidence from Annual Audits

- 12th audit: March - May 2005
- 3rd party
- 93 sites audited
- Performance audited:
 - erosion controls, eg staged clearing, prompt revegetation
 - sediment controls, eg sediment fences and basins
 - drainage controls, eg catch drains and check dams
 - compliance with the Environmental Protection Act
 - Best Practice/ Best Available Technology
 - Builders/ sub-contractors knowledge and attitudes

CLEAN AND GREEN CITY



Sites audited

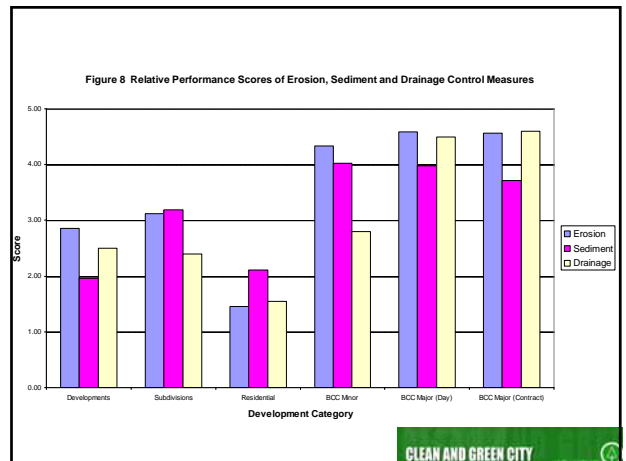
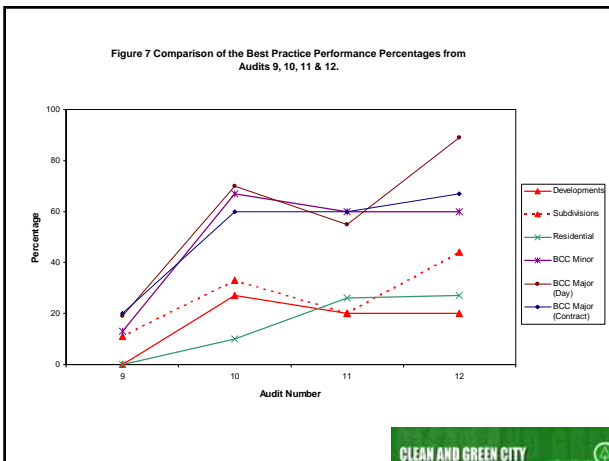
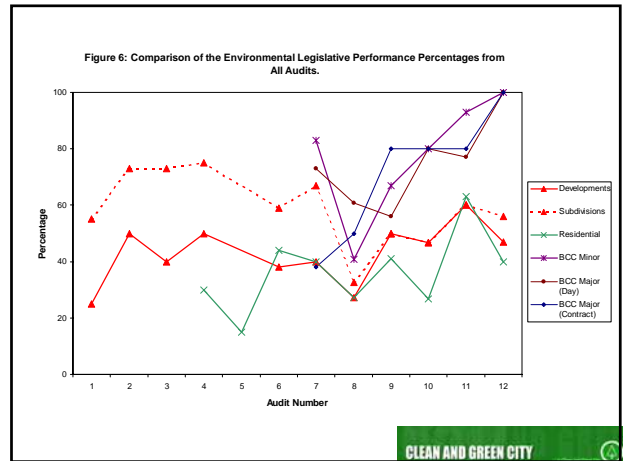
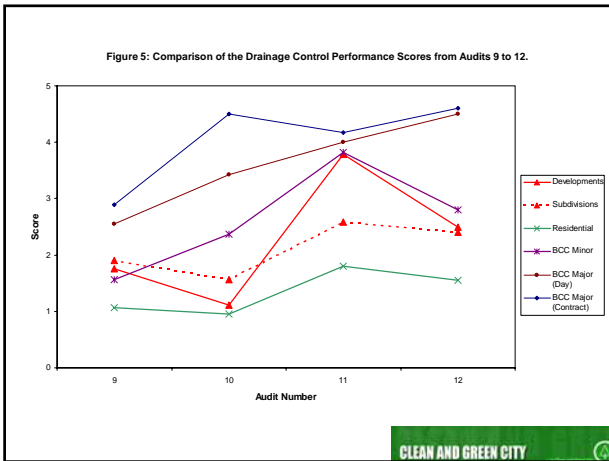
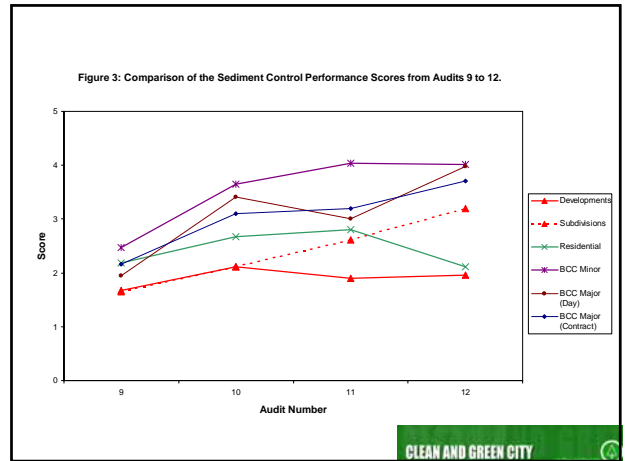
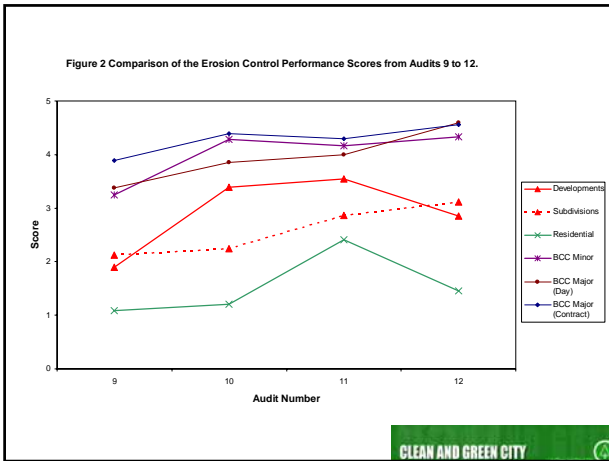
- Residential construction - small sites
- Residential subdivisions - large sites
- Developments, commercial, industrial, units, townhouses
- Minor council sites, roads, sewers etc
- Major council sites (day labour) bridge maintenance, landfills,
- Major council sites (contracts) bridge construction, dams, boat ramps

CLEAN AND GREEN CITY



CLEAN AND GREEN CITY





Results

- Subdivisions have improved most - using more control techniques such as erosion matting and vegetation
- Few private sector sites using drainage controls
- Residential sites heavily reliant on sediment controls but often poor location and maintenance
- Poor compliance with the legislation
- High level of knowledge from workers and sub-contractors

CLEAN AND GREEN CITY



Legislative amendments

- The Integrated Planning Act is not an effective mechanism for addressing short-term impacts due to lack of effective tools, eg infringements, EPOs etc
- EPP s.31 & s.32 Infringements - factored into cost of development, low penalties

CLEAN AND GREEN CITY



Improving regulatory tools

- Empower councils to be able to apply EP Act concurrence conditions to DAs for erosion & sediment control.
- Developments are already assessed and conditioned under IDAS so no additional costs or delays to applicants.
- The EP Act contains the full suite of regulatory tools to address environmental impacts.
- Councils need the delegated authority to use them.

CLEAN AND GREEN CITY



Conclusion

- Research shows that level of awareness is high
- There is a need for more effective regulation
- Councils need quick, proportionate and effective regulatory tools

CLEAN AND GREEN CITY

